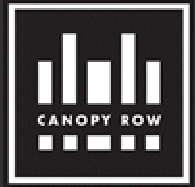


# Canopy Row Office/Retail

140 S. Canopy Row in the Historic Haymarket



## **Building Information:**

Office Space Available:	2,996-8,988 sq ft (2,996 sq ft per floor)
Retail Space Available:	2,256-5,162 sq ft
Lease Structure:	Triple Net
Office Rental Rates:	2 <sup>nd</sup> floor: \$12.00/SF NNN 3 <sup>rd</sup> floor: \$11.00/SF NNN 4 <sup>th</sup> floor: \$15.00/SF NNN
Retail Rental Rate:	\$15.00/SF NNN
Zoning:	B4
Parking:	Attached parking garage, metered stalls
Tenant Improvements:	Negotiable
Signage:	As shown on attached elevations

## **Overview:**

Canopy Row is an exciting new mixed-use development in Lincoln's Historic Haymarket. These liner buildings wrap around the City-owned Lumberworks parking garage and include office, residential and retail space. The project includes Lincoln's new downtown grocery store as the anchor tenant. Located at the intersection of Canopy Street and N Street, it's within a short walk to all the restaurants, shops and entertainment available in the Haymarket!

*canopyrow.com*

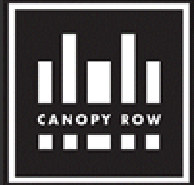
*All information contained herein, while deemed to be reliable, cannot be guaranteed. Terms are subject to change without notice.*

## **Contact Us**

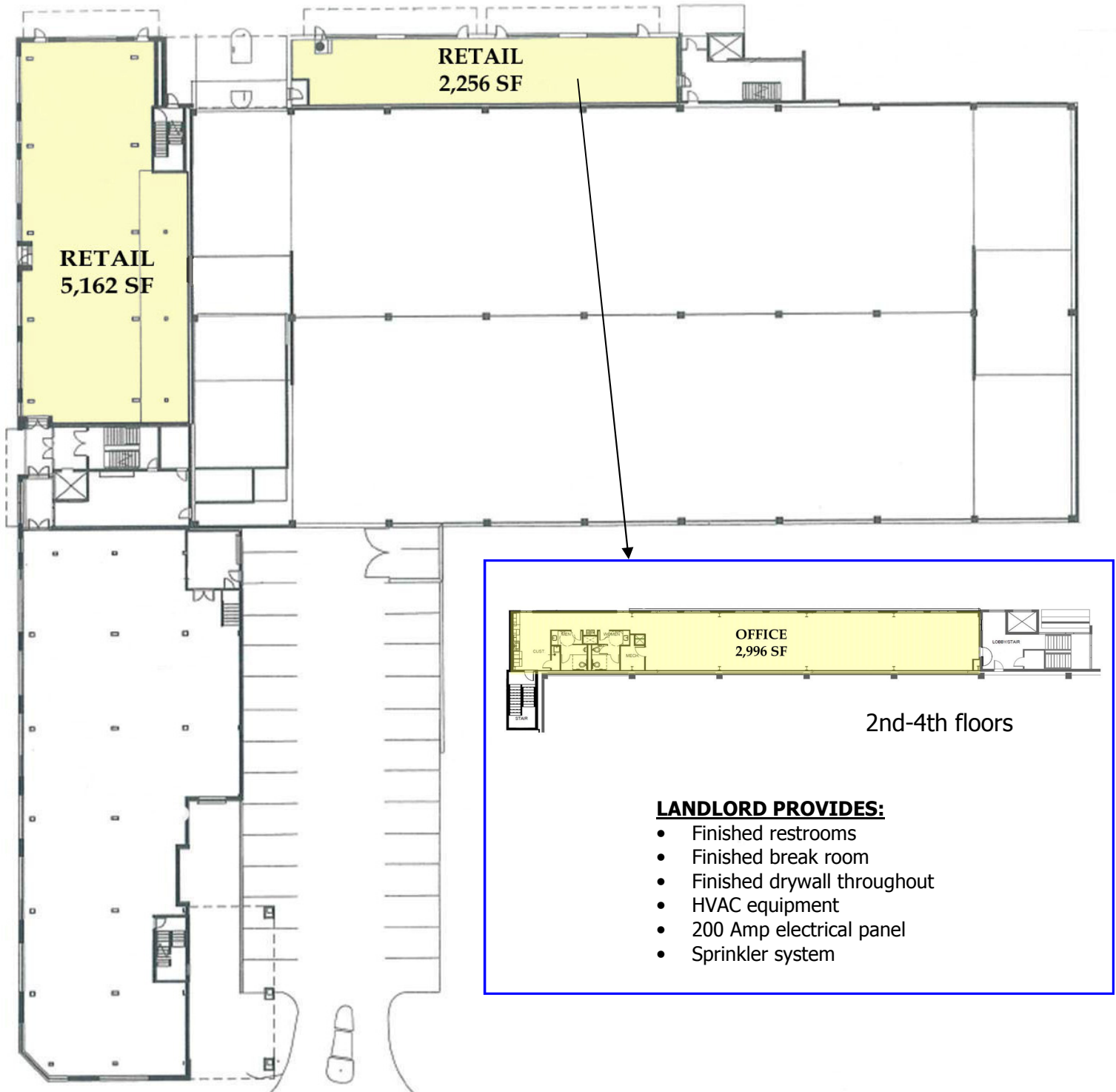
Tom Gifford, CCIM  
402-323-3124 office  
402-326-2413 mobile  
tjgifford@speedwayproperties.com

Paige Keech  
402-323-3157 office  
402-380-5642 mobile  
pekeech@speedwayproperties.com

# Canopy Row Office/Retail



140 S. Canopy Row in the Historic Haymarket



*All information contained herein, while deemed to be reliable, cannot be guaranteed. Terms are subject to change without notice.*

## Contact Us

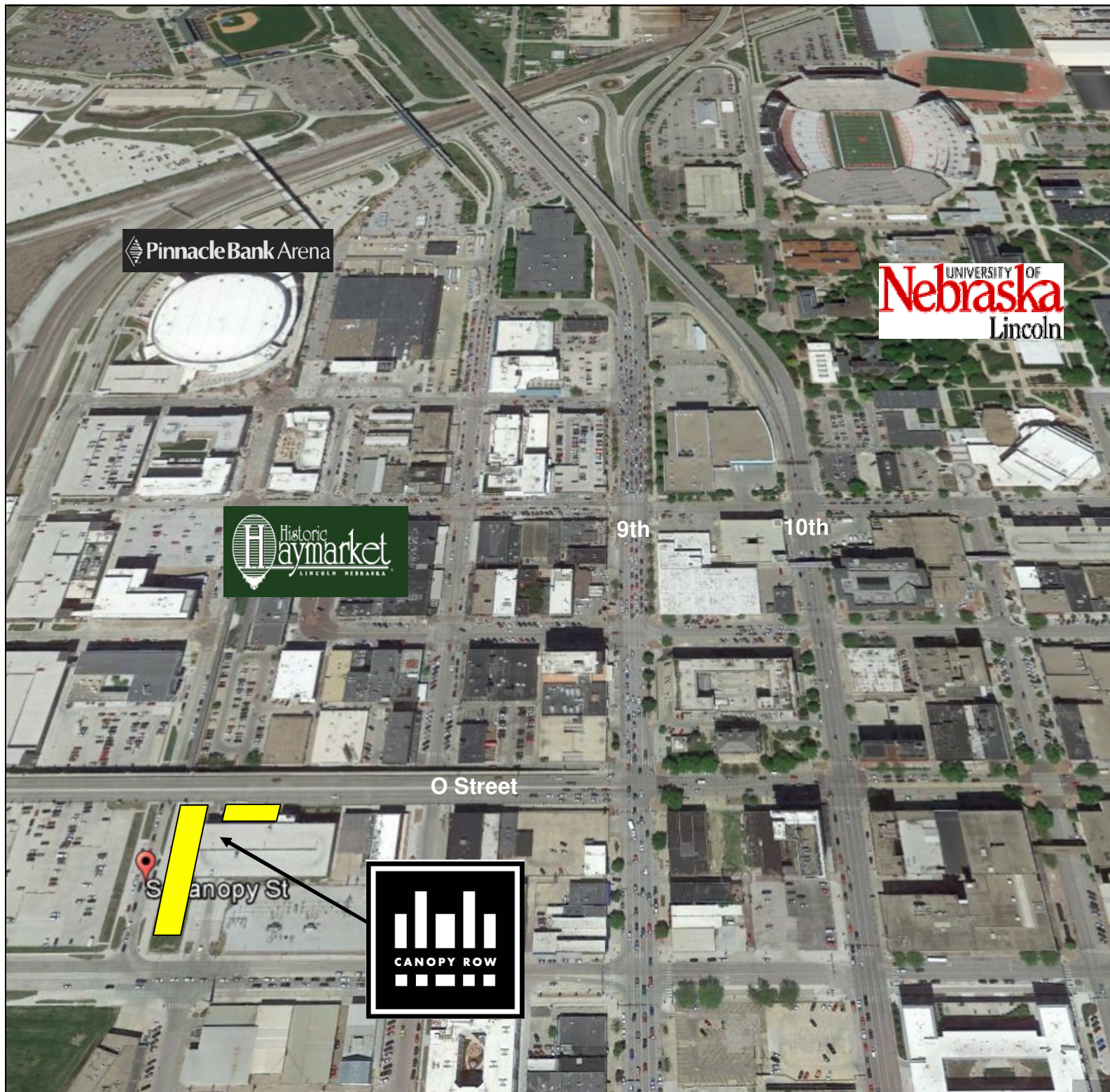
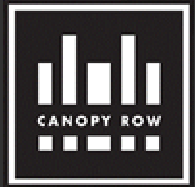
Tom Gifford, CCIM  
402-323-3124 office  
402-326-2413 mobile  
tgifford@speedwayproperties.com

Paige Keech  
402-323-3157 office  
402-380-5642 mobile  
pekeech@speedwayproperties.com



# Canopy Row Office/Retail

140 S. Canopy Row in the Historic Haymarket



All information contained herein, while deemed to be reliable, cannot be guaranteed. Terms are subject to change without notice.

## Contact Us

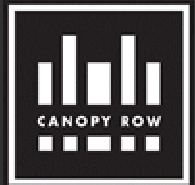
Tom Gifford, CCIM  
402-323-3124 office  
402-326-2413 mobile  
tgifford@speedwayproperties.com

Paige Keech  
402-323-3157 office  
402-380-5642 mobile  
pekeech@speedwayproperties.com

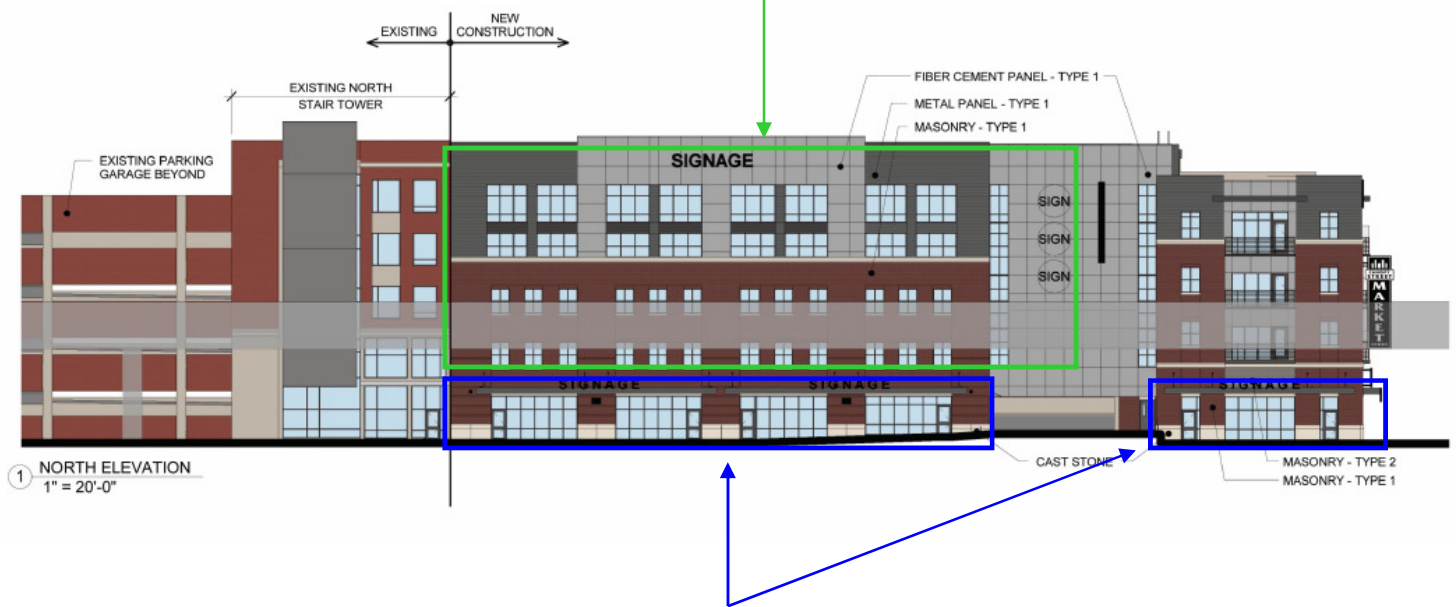


# Canopy Row Office/Retail

140 S. Canopy Row in the Historic Haymarket



**OFFICE**



**AVAILABLE RETAIL**



**AVAILABLE RETAIL**



*All information contained herein, while deemed to be reliable, cannot be guaranteed. Terms are subject to change without notice.*

## Contact Us

Tom Gifford, CCIM  
402-323-3124 office  
402-326-2413 mobile  
tjgifford@speedwayproperties.com

Paige Keech  
402-323-3157 office  
402-380-5642 mobile  
pekeech@speedwayproperties.com